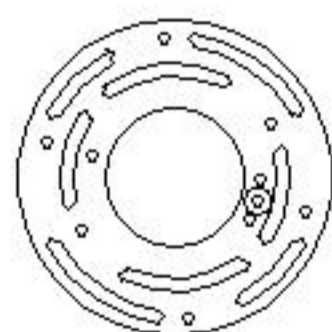
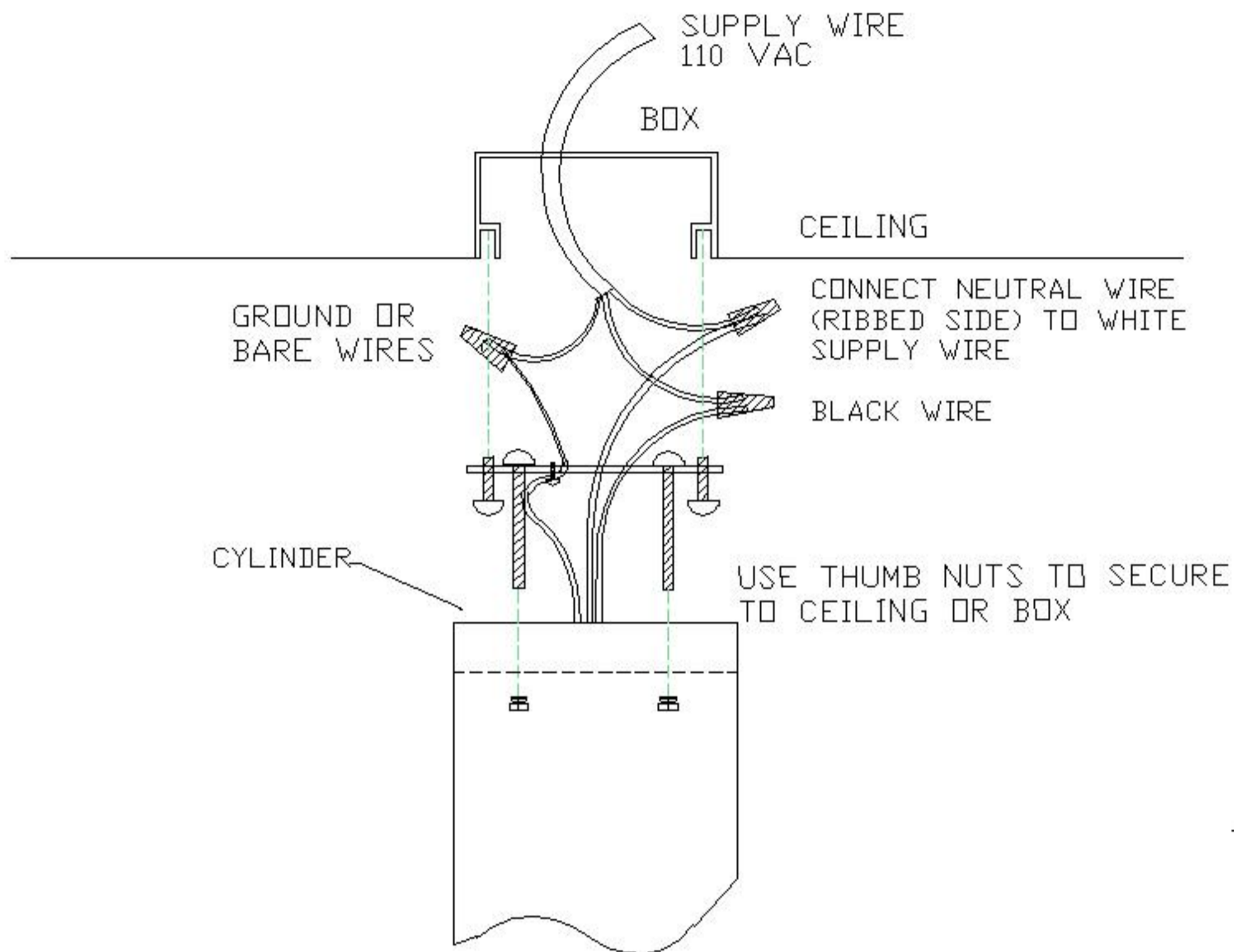
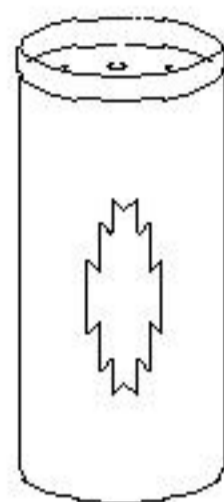


RevN-	Revision Note	Date	Signature
0	INITIAL RELEASE	9/25/04	AVD
A	CEILING MOUNTED	3/1/06	AVD

**\*\* IMPORTANT \*\***  
**INSURE ELECTRICAL POWER IS OFF TO ELECTRICAL BOX BEFORE PROCEEDING!**  
**MINIMUM 90° EC SUPPLY CONDUCTORS**



CONNECT CROSS BAR  
TO JUNCTION BOX

THIS PRODUCT MUST BE INSTALLED IN ACCORDANCE WITH THE APPLICABLE INSTALLATION CODE BY A PERSON FAMILIAR WITH THE CONSTRUCTION AND OPERATION OF THE PRODUCT AND THE HAZARDS INVOLVED AND OR A QUALIFIED ELECTRICIAN.

**INSTALLATION STEPS:**

**\*\* IMPORTANT \*\*** INSURE ELECTRICAL SERVICE IS TURNED OFF BEFORE PROCEEDING

1. REMOVE ALL ITEMS FROM BOX. INSPECT FOR DAMAGE AND REPORT DAMAGED ITEM TO STONE MATHER DESIGNS.
2. FASTEN MOUNTING CROSS BAR TO OUTLET BOX.
3. CONNECT NEUTRAL WIRE WITH WHITE SUPPLY WIRE AND CONNECT HOT WIRE WITH BLACK SUPPLY WIRE USING WIRE NUTS.
4. LOOP GROUNDING WIRE AROUND GROUND SCREW ON CROSS BAR AND TIGHTEN. CONNECT GROUNDING WIRE FROM OUTLET BOX WITH GROUNDING WIRE FROM FIXTURE USING WIRE NUT.
5. THREAD THUMBNUTS ONTO SCREWS FROM CROSSBAR (INSIDE CYLINDER) AND TIGHTEN TO SECURE TO CEILING.

UNDERWRITERS LABORATORIES COMPLIANCE



1. INCANDESCENT FILE #E170691  
 2. FLUORESCENT FILE #E172522

**STONE MATHER DESIGNS**

4444 Tower Rd. SW  
 Albuquerque, NM 87121  
 Phone (505) 247-4276  
 Fax (505) 247-4538

INSTALLATION INSTRUCTIONS

CEILING MOUNTED CYLINDER

Date: 9/25/2014  
 Designed by: AVD  
 Sheet: 1/1